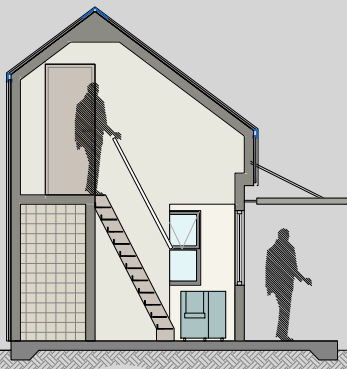
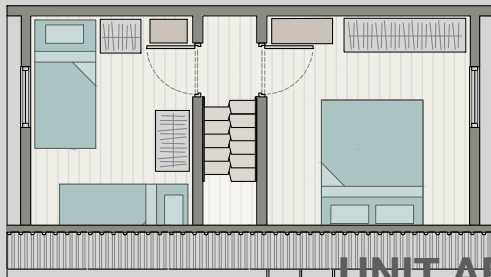


# Living POD

## The CABIN

### Small



### UNIT AREA

(External Build Envelope)

Ground 25,5m<sup>2</sup>

Loft Area. 20,0m<sup>2</sup>

**TOTAL. 45,5m<sup>2</sup>**

**R 370,000 (SA)**

**N\$ 385,000 (Nam)**

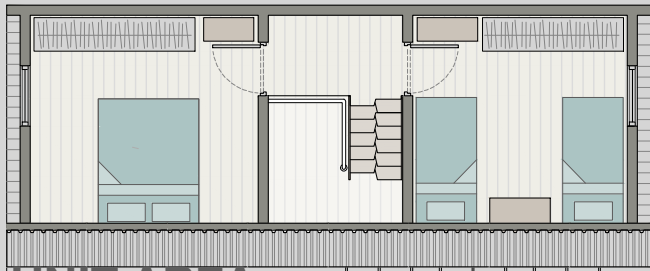
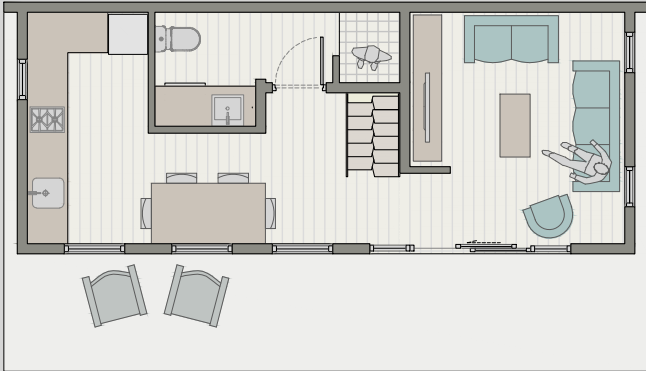
The price is for a completed and finished unit incl. of all professional, financing and marketing fees. This excl. land cost & services.



# Living POD

## The CABIN

### Medium



### UNIT AREA

(External Build Envelope)

Ground 34,5m<sup>2</sup>

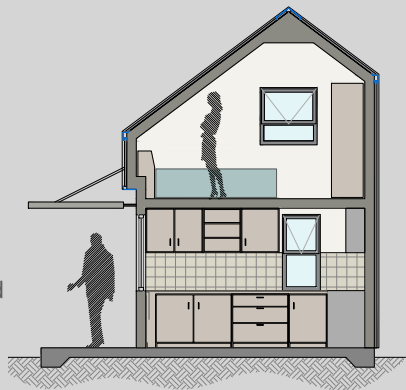
Loft Area. 25,5m<sup>2</sup>

**TOTAL. 60,0m<sup>2</sup>**

**N\$ 450,000**

N\$ 470,000)

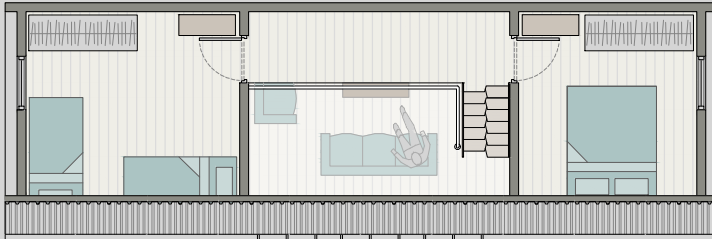
The price is for a completed and finished unit incl. of all professional, financing and marketing fees. This excl. land cost & services.



# Living POD

## The CABIN

### Large



### UNIT AREA

(External Build Envelope)

Ground 43,5m<sup>2</sup>

Loft Area. 28,4m<sup>2</sup>

**TOTAL. 71,9m<sup>2</sup>**

**R 500,000 (SA)**

N\$ 525,000 (Nam)

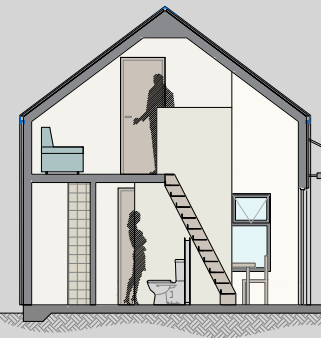
The price is for a completed and finished unit incl. of all professional, financing and marketing fees. This excl. land cost & services.



# Living POD

## The COTTAGE

### Medium



#### UNIT AREA

(External Build Envelope)

Ground 53.0m<sup>2</sup>

Loft Area. 33.7m<sup>2</sup>

**TOTAL. 86.7m<sup>2</sup>**

**R 650,000 (SA)**

**N\$ 680,000 (Nam)**

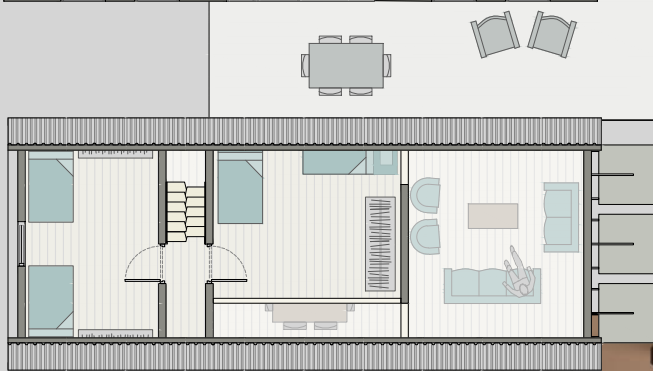
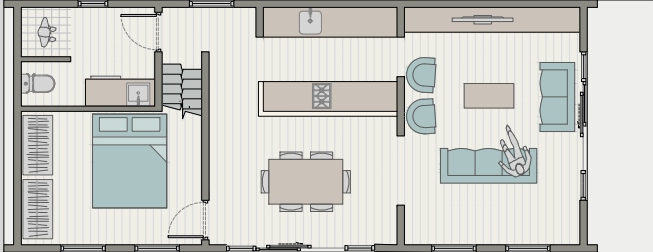
The price is for a completed and finished unit incl. of all professional, financing and marketing fees. This excl. land cost & services.



# Living POD

## The COTTAGE

### Large



### UNIT AREA

(External Build Envelope)

Ground 53,0m<sup>2</sup>

Loft Area. 33,7m<sup>2</sup>

**TOTAL. 86,7m<sup>2</sup>**

**R 650,000 (SA)**

N\$ 680,000 (Nam)

The price is for a completed and finished unit incl. of all professional, financing and marketing fees. This excl. land cost & services.



# Living POD

## The CHALET

### One Bed



### UNIT AREA

(External Build Envelope)

Ground 49,9m<sup>2</sup>

Loft Area. 18,2m<sup>2</sup>

**TOTAL. 68,1m<sup>2</sup>**

**R 500,000 (SA)**

N\$ 530,000 (Nam)

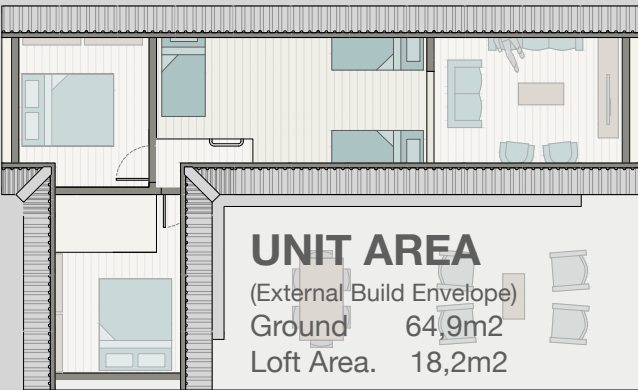
The price is for a completed and finished unit incl. of all professional, financing and marketing fees. This excl. land cost & services.



# Living POD

## The CHALET

### Two Bed-S



#### UNIT AREA

(External Build Envelope)

Ground 64,9m<sup>2</sup>

Loft Area. 18,2m<sup>2</sup>

**TOTAL. 83,1m<sup>2</sup>**

**R 650,000 (SA)**

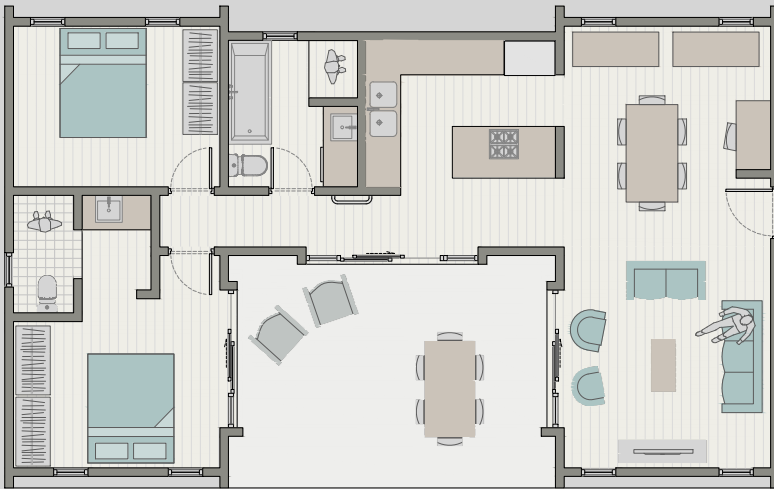
N\$ 680,000 (Nam)

The price is for a completed and finished unit incl. of all professional, financing and marketing fees. This excl. land cost & services.



# Living POD

## The CHALET Two Bed - L



With sleeping Loft over bathroom & kitchen.

### UNIT AREA

(External Build Envelope)

Ground 84,6m<sup>2</sup>

Loft Area. 14,4m<sup>2</sup>

**TOTAL. 99,0m<sup>2</sup>**

**R 750,000 (SA)**

N\$ 780,000 (Nam)

The price is for a completed and finished unit incl. of all professional, financing and marketing fees. This excl. land cost & services.

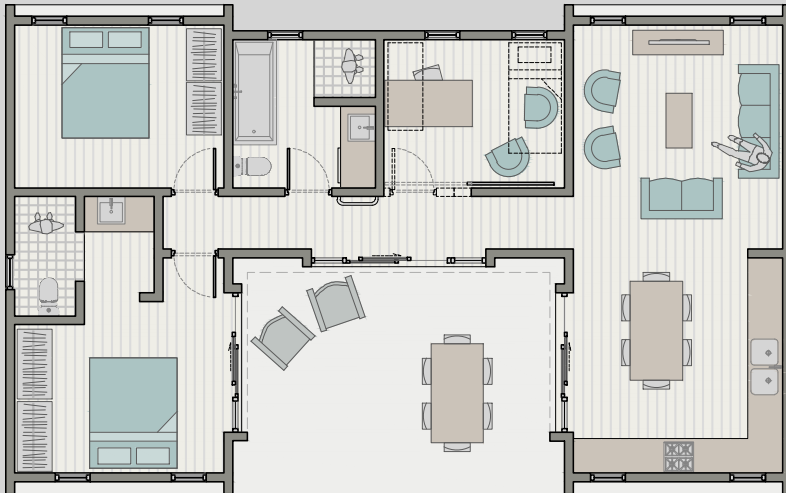




# Living POD

## The CHALET

### Three Bed



With sleeping Loft over bathroom & kitchen.

### UNIT AREA

(External Build Envelope)

Ground 84,6m<sup>2</sup>

Loft Area. 14,4m<sup>2</sup>

**TOTAL. 99,0m<sup>2</sup>**

**R 730,000 (SA)**

N\$ 760,000 (Nam)

The price is for a completed and finished unit incl. of all professional, financing and marketing fees. This excl. land cost & services.

