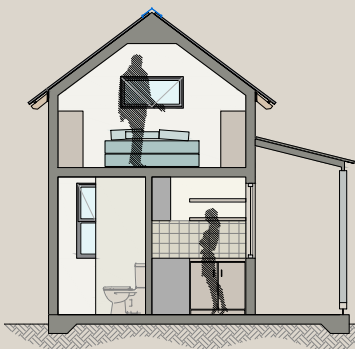
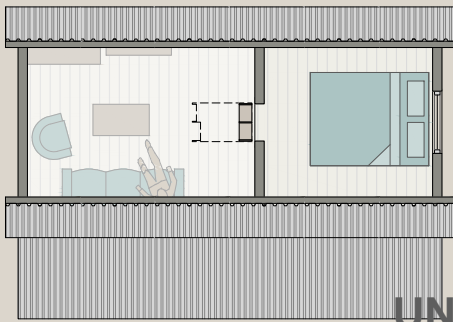
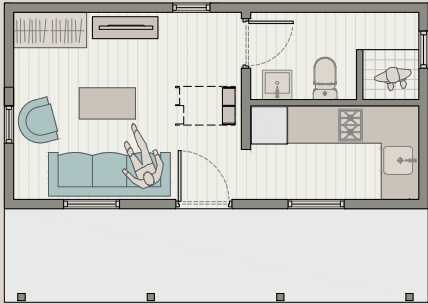


# Living PAD

## The LAIR Small



### UNIT AREA

(External Build Envelope)

Ground 22,4m<sup>2</sup>

Loft Area. 8,1m<sup>2</sup>

**TOTAL. 30,5m<sup>2</sup>**

**R 285,000 (SA)**

**N\$ 300,000 (Nam)**

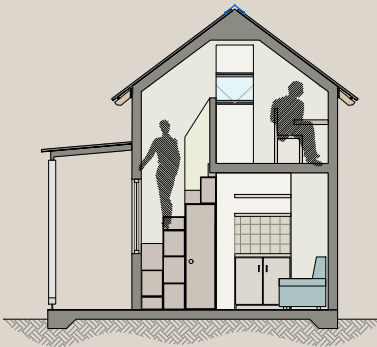
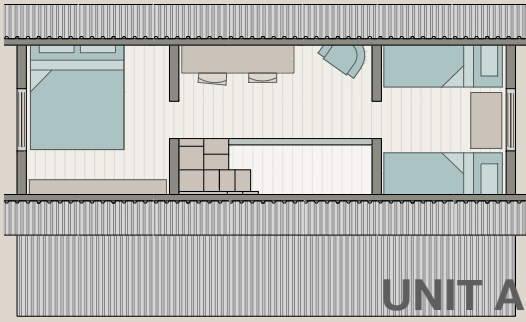
The price is for a completed and finished unit incl. of all professional, financing and marketing fees. This excl. land cost & services.



# Living PAD

## The LAIR

### Medium



### UNIT AREA

(External Build Envelope)

Ground 26,4m<sup>2</sup>

Loft Area. 18,7m<sup>2</sup>

**TOTAL. 45,1m<sup>2</sup>**

**R 335,000 (SA)**

N\$ 350,000 (Nam)

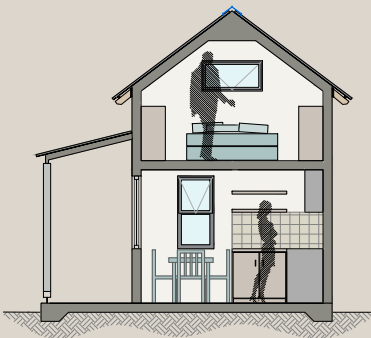
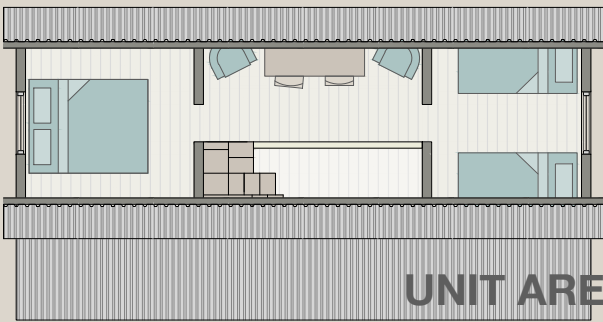
The price is for a completed and finished unit incl. of all professional, financing and marketing fees. This excl. land cost & services.



# Living PAD

## The LAIR

### Large



### UNIT AREA

(External Build Envelope)

Ground 30,4m<sup>2</sup>

Loft Area. 21,8m<sup>2</sup>

**TOTAL. 52,2m<sup>2</sup>**

**R 375,000 (SA)**

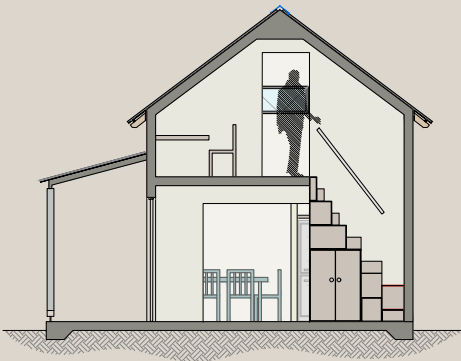
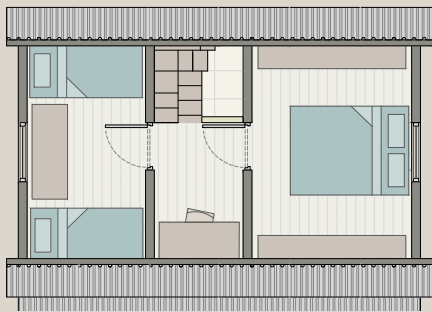
**N\$ 390,000 (Nam)**

The price is for a completed and finished unit incl. of all professional, financing and marketing fees. This excl. land cost & services.



# Living PAD

## The CAVE *Small*



### UNIT AREA

(External Build Envelope)

Ground 30,6m<sup>2</sup>

Loft Area. 24,4m<sup>2</sup>

**TOTAL. 55,0m<sup>2</sup>**

**R 375,000 (SA)**

**N\$ 390,000 (Nam)**

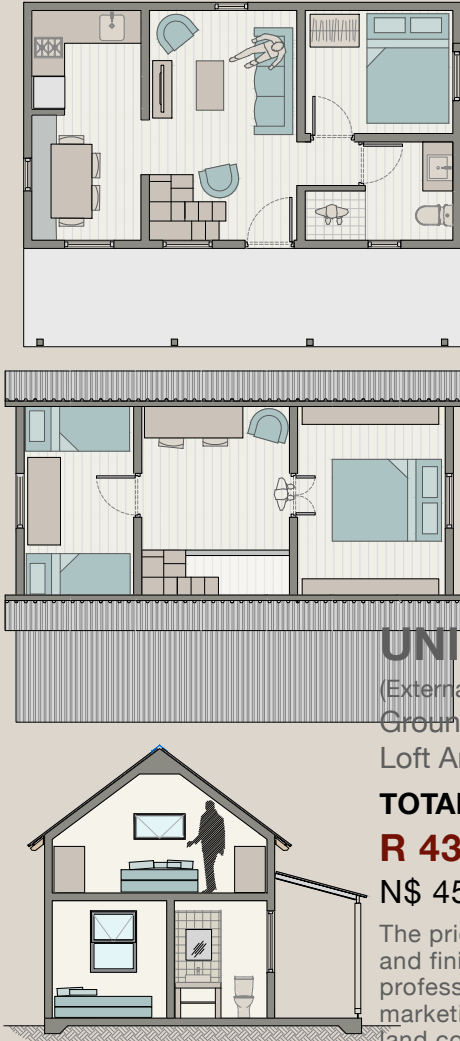
The price is for a completed and finished unit incl. of all professional, financing and marketing fees. This excl. land cost & services.



# Living PAD

## The CAVE

### Medium



**UNIT AREA**  
(External Build Envelope)  
Ground 36,0m<sup>2</sup>  
Loft Area. 28,7m<sup>2</sup>  
**TOTAL. 64,7m<sup>2</sup>**  
**R 435,000 (SA)**  
**N\$ 450,000 (Nam)**

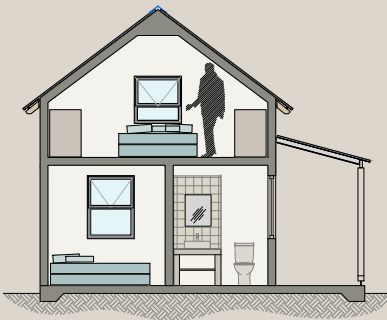
The price is for a completed and finished unit incl. of all professional, financing and marketing fees. This excl. land cost & services.



# Living PAD

## The CAVE

### Large



#### UNIT AREA

(External Build Envelope)

Ground 41,4m<sup>2</sup>

Loft Area. 31,1m<sup>2</sup>

**TOTAL. 72,5m<sup>2</sup>**

**R 500,000 (SA)**

N\$ 525,000 (Nam)

The price is for a completed and finished unit incl. of all professional, financing and marketing fees. This excl. land cost & services.



# Living PAD

## The SHACK

### 2 Bed Small



### UNIT AREA

(External Build Envelope)

Ground 34,7m<sup>2</sup>

**TOTAL. 34,7m<sup>2</sup>**

**R 335,000 (SA)**

N\$ 350,000 (Nam)

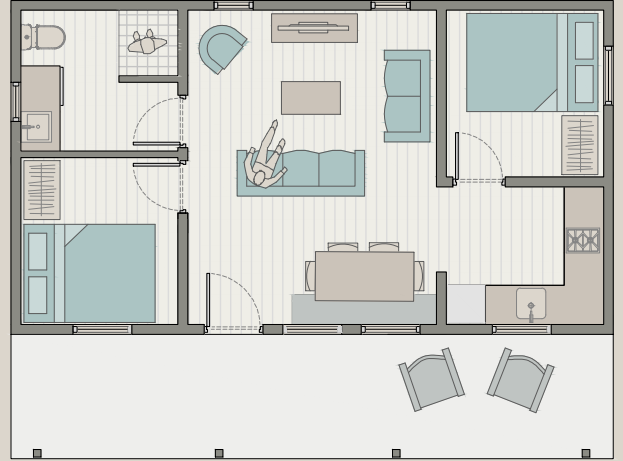
The price is for a completed and finished unit incl. of all professional, financing and marketing fees. This excl. land cost & services.



# Living PAD

## The SHACK

### 2 Bed Large



### UNIT AREA

(External Build Envelope)

Ground 46,9m<sup>2</sup>

**TOTAL. 46,9m<sup>2</sup>**

**R 400,000 (SA)**

N\$ 420,000 (Nam)

The price is for a completed and finished unit incl. of all professional, financing and marketing fees. This excl. land cost & services.





# Living PAD

## The SHACK

### 3 Bedroom



### UNIT AREA

(External Build Envelope)  
Ground 59,2m<sup>2</sup>

**TOTAL. 59,2m<sup>2</sup>**

**R 450,000 (SA)**

N\$ 475,000 (Nam)

The price is for a completed and finished unit incl. of all professional, financing and marketing fees. This excl. land cost & services.

